



CONCISE INDUSTRIES PVT. LTD.



Registered office & Works Address

Plot No. F-224, Industrial Area
Karoli, Tijara (Distt. Alwar)

CONCISE INDUSTRIES PRIVATE LTD



***KAROLI INDUSTRIAL AREA-THE BORDER LINE OF
HARYANA & RAJASTHAN – A GROWING INDUSTRIAL
TOWN***



INTRODUCTION

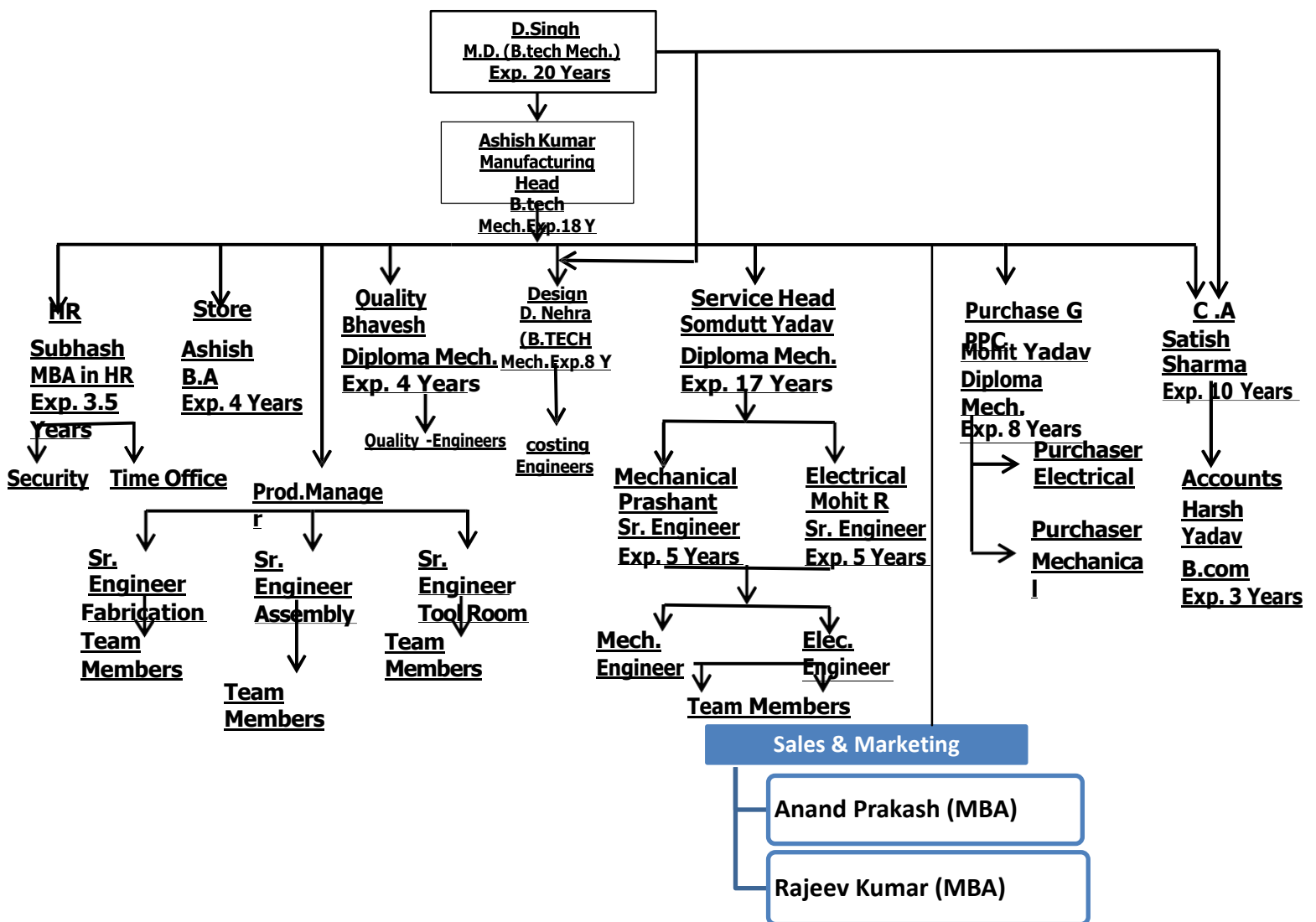
Located at the heart of Delhi-NCR industrial area, **KAROLI INDUSTRIAL AREA**, we are an upcoming manufacturing company founded in 2008. Our core founders have an expertise in the manufacturing field for over 8 years. Our facility is spread over in an area of approximately 2,500 sq. ft. and is well equipped. Our aim is to provide equipment and services to infrastructure and Automobile industries. Hence, we provide a wide range of services and products.

MARKETING : All the products manufactured by the Company are marketed directly. Most of the products are tailor made to suit customers' specifications. Company has excellent after sales service network to provide support to valued customers.

-
- State of the art manufacturing facility is situated in KAROLI Industrial Area TIJARA, NCR Delhi, situated on 85 KM. stone on NH 8, connectivity with rail, road & air
 - All manufacturing facilities under one roof translates into shorter production cycles, lower costs and flexibility.
 - Our manufacturing unit is well equipped with state of art Plant & Machinery. We have a strict quality control department, which ensures quality checks at various stages of production.
 - Ample space for future expansion.
-



Organization Structure





COMPANY MAJOR STRENGTHS

- Adhere to timely delivery with consistent quality .
 - CAD/CAM 2D-3D Modeling on licensed 'Solid Works premium - 2018' .
 - Great organization structure with good strength of qualified engineers.
 - Dedicated Work Force to take challenge for any given tasks
-



OUR STRENGTHS

- Adhere to timely delivery with consistent quality .
- Strong work culture , strong moral C Ethical value system
- All division operating under one roof translate Into quick response time C lower lead time.
- The Company is also engaged in the field of Project execution involving design, Manufacturing, Installation C Services .
- The ready acceptability and continued patronage is an adequate proof that the clients are happy and satisfied with the quality and performance of the Company's Products and Services.
- Great organization structure with good strength of qualified engineers.
- Dedicated Work Force to take challenge for any given tasks



QUALITY POLICY

We are committed to achieve ever increasing levels of customer satisfaction through continual improvement in quality of products and services.

- **This will be achieved by our total commitment to:**
 - **Consistent Quality**
 - **On time Delivery**
 - **Adopt safety norms in products and services**
 - **Continuous review and upgrading of systems**
-



OUR QUALITY :

- To nurture quality at each and every stage of manufacturing process , We follow stringent Q.C. Policy which adheres to BIS standards .
 - We are ISO 9001 : 2015 Certified Co - UK MERITS ASSESSMENTS LTD, ENGLAND
 - Attention to proper fit and functional Engineering, produces consistent result in product after product, winning TRUST C CONFIDENCE of our valued Customers .
-



MAJOR EMINENCE OF CONCISE MAKE CRANES

A. GENERAL ASSESSMENT	
1.	DIMENSIONS Plant is having approximately 2500 SQM of area with following shops
	SHOP NO. 1 13 M wide x 45 M Long having two nos. of overhead cranes
	SHOP NO. 2 13 M wide x 45 M long having one no. of overhead crane
a)	Also @ 1 Nos. of hydraulic pick and carry cranes and one no. of forklifts are available for material handling
b)	Adequate power generating capacity is available to run the plant in case of power supply from electricity board. However, such cases are minimal
	PRODUCTIVITY Adequate no. of machines and welding sets are available in-house (photographs attached because of above, they have better control on productivity. Basic metallurgy checking facility is also available. We can produce 2-3 gantry cranes every month after a gestation period of 45 days. Layout of the plant is good.
	PREVIOUS EXPEREINCE CONCISE has supplied 10/5T x 17.3M span DG EOT cranes – to Maxop Engineering co. Pvt Ltd. site one year back and also 10T x 11.8 M x 8M DG Gantry Crane to NTF India Pvt. Ltd. site, which has been commissioned and load testing / third party certification is done. List of major supplied made to various customers is attached herewith.
	QULAITY CONTROL Inspection and QA methods were checked. They have their standard quality assurance pan which is attached herewith. Record of observations is maintained. Party is ISO 9001:2015 Certified. Adequate numbers of Quality Control instruments are available.



MAJOR EMINENCE OF CONCISE MAKE

B.	MECHANICAL ASSESSMENT	
	QUALITY OF STEEL	Steel lying in the plant was from reputed suppliers like SAIL/ TATA/ ESSAR. Steel supplied was found to be matches with test certificate from OEM.
	WELDING QUALITY	Manual metal ARC welding and Metal inert gas welding are in use. However, DP test and Ultrasonic test for butt joints are being used as per our quality plan. Two coats of Zinc Rich primer and two coats syenthic enmel paint is being used by the us
	ELECTRICAL MOTOR	For long travel and cross travel NORD/SEW make geared brake motors are being used in almost all cranes. For hoisting – Marathon (Earlier Alstom) make are being used. All motors are to be suitable for inverter duty.
	HOIST AND WIRE ROPES DRUMS	Rope drum are being manufacture from Seam less pipes as per ASTM A-106. Wire Rope used is of Steel core, hi-grade USHA Martin make. All bearings are of FAG make
	GEAR BOXES ETC	For Cross and Long travel, we only use NORD Gear Boxes, wheels are manufactured from EN-9 Forgings and are heat treated.
	ELECTRICAL CONTROL PANEL	All electrical control panels are being assembled in a separate room earmarked specially for this purpose. Control panel boxes are powder coated and they are all IP-55 protection.
	BRAKING SYSTEM	Electro-magnetic DC brakes as well as electrohydraulic thruster brakes are used of NORD, power and control system and of crane control make. Load cell with Jumbo display having cut off facility along with limit switches are being used by us
	SPEED CONTROL	Speed control is through VVFD of Schneider/ Yaskawa make
	LIMIT SWITCHES	For hoisting /lowering- rotary geared limit switches are being used. Additionally for over hoisting, gravity type limit switches is being used. FOR CT & LT- two-way lever type limit switches are being used.
	ROUTING OF CABLES	CONCISE provides cable laying drawing along with each crane as this is being done at site Joystick and remote control are frequently being used in our crane and they are from reputed Indian brand.



MAJOR PRODUCT

EOT AND GANTRY CRANES

TRANSFER TROLLEYS

CRAB /HOISTS

LADDLE CAR

CHAIN HOIST

EOT Crane

Electrically Operated Overhead Travelling Cranes are designed & manufactured in accordance with IS: 3177 and IS: 4137 considering adequate factor of safety with respect to appropriate duty classifications. The structural parts of the cranes are designed in Accordance with IS: 807 also manufactures cranes as per international standards cranes are manufactured with standard components and controls to ensure reliability.

Single Girder EOT Crane

Single girder cranes have compact construction and allow maximum utilization of room height.

Capacity : Upto 20,000 Kg

Span : Upto 40 Mtrs.

Height of Lift : As per customer specifications



Double Girder EOT Crane

Double girder cranes are rugged in construction and find their use in a wide range of hoisting capacities and applications.

Capacity : Upto 2,00,000 Kg

Span : Upto 40 Mtrs.

Height of Lift : As per customer specifications

Gantry Cranes

Manufactures Gantry Cranes ranging from 1 Ton to 60 Ton Capacity and up to 40 meters span and Height of lift as per customer's requirement. These are generally used outdoors in Engineering Industries, Ship yards, Ports, Granite, Steel Yards, Cement Pipe Industries, Open Yard, Storage places, Container Depots etc.



End Carriages

Technical features:

- Capacity - up to 20 000kg
- Group FEM 2m
- Span - up to 25m
- Wheel diameter 160-315 mm
- End carriage profile:

Rectangular tube or weldedstructure

- Cranes girder connection:

High-tensile bolt connection



PLANT VIEW
PHOTOGRAPHS

The image shows the exterior of a large industrial building with a dark grey, vertically-ribbed metal facade. The word "CONCISE" is mounted on the wall in large, bold, red, three-dimensional block letters. To the left of the word is a circular logo featuring a yellow sun-like symbol with a black outline. The building has a wide, open entrance area below the facade, and a concrete wall is visible in the foreground.

CONCISE

**Industrial Plot No.F-224, Karoli,
Tijara, Alwar, Rajasthan, 301707**

CONCISE





STORE



STORE







PLANT PHOTOGRAPHS









GEARBOX ASSEMBLY





ELECTRICAL DEPARTMENT





MACHINE SHOP

- Power Press
 - Lathe Machine
 - Milling Machine
 - Shaper Machine
 - Radial Drill Machine
 - Shearing Machine
 - Bending Machine
 - Grinding Machine
 - Boring Machine
 - Rolling Machine
 - Magnetic Drill Machine
 - Bend Saw
 - Semi Radial Drill
-



INSPECTION FACILITIES :

- ❖ VERNIER CALLIPER
- ❖ OUTSIDE MICROMETER
- ❖ BORE GAUGE
- ❖ COMBINATION SET
- ❖ FILLER GAUGE
- ❖ ULTRA SONIC MACHINE
- ❖ D. B. METER
- ❖ FLANGE MICROMETER
- ❖ RADIUS GAUGE
- ❖ DIAL TEST INDICATER
- ❖ G. SURFACE PLATE
- ❖ DIGITAL VERNIER CALIPER
- ❖ DIGITAL INSULATION TESTER
- ❖ CLAMP METER
- ❖ HIGH VOLTAGE TESTER
- ❖ HARDNESS TESTER FOR HRB SCALE
- ❖ HARDNESS TESTER FOR HRC SCALE
- ❖ WEIGHING BALANCE

**CONCISE INDUSTRIES PVT
LTD**

**WELDING /
FABRICATION SHOP
PHOTOGRAPHS**



EDGE PREPARATION IN PROCESS





IN PROCESS TESTING – DP TEST





IN PROCESS TESTING – LOAD TESTING





FACILITY OF PAINTING





CONCISE INDUSTRIES PRIVATE LIMITED

PRODUCT VIEW
PHOTOGRAPHS



GOLIATH CRANE





EOT CRANE





HOIST



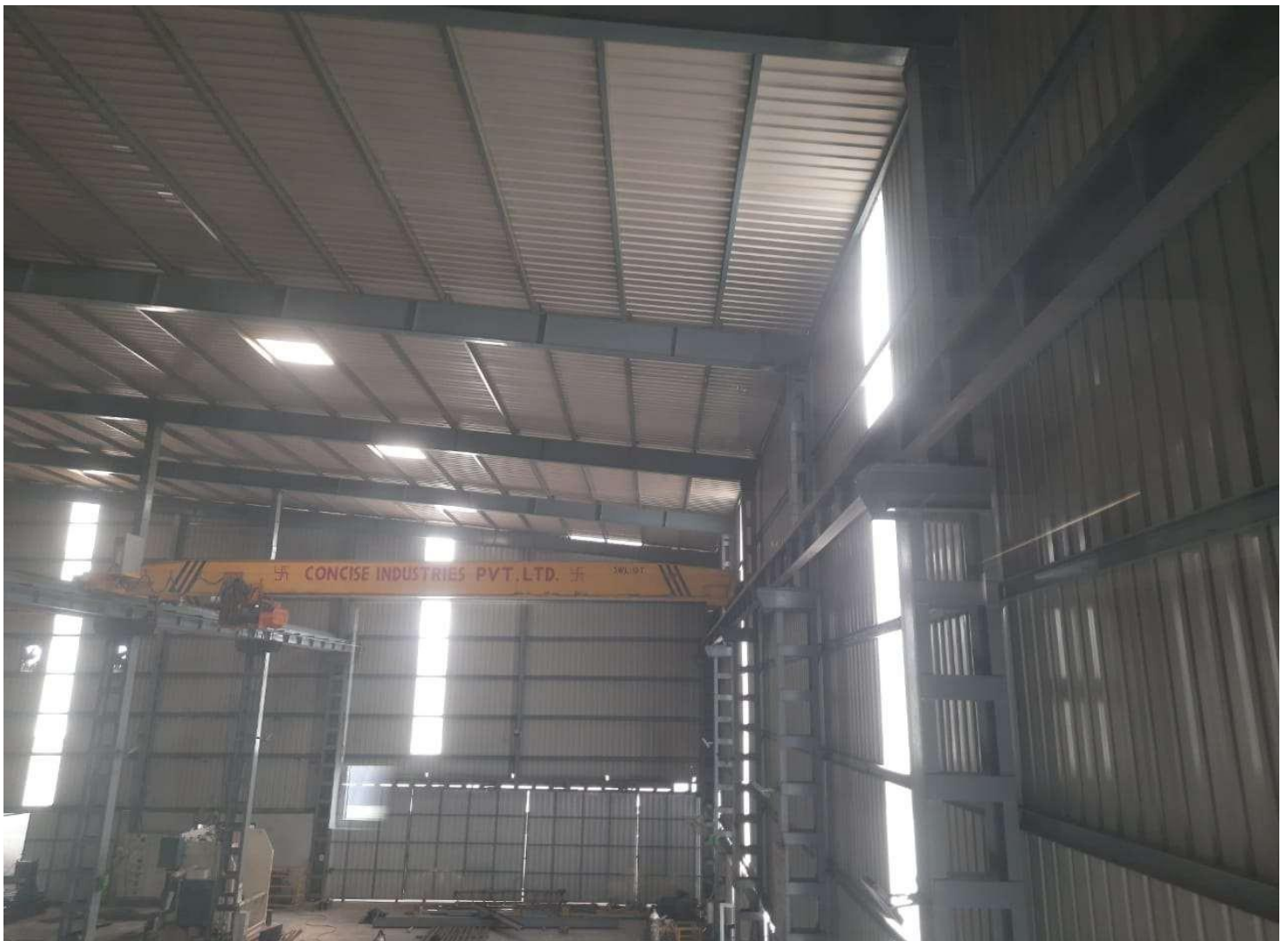


EOT CRANE





EOT CRANE





TRANSFER TROLLEY





DG EOT CRANE



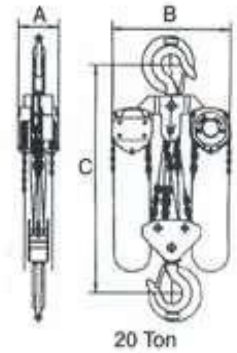
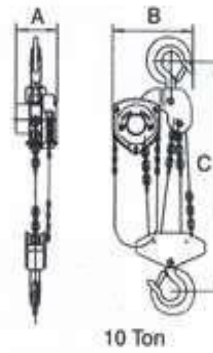
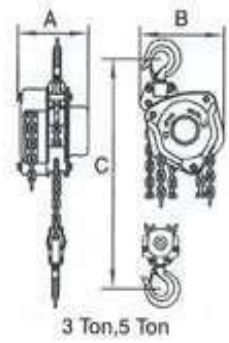
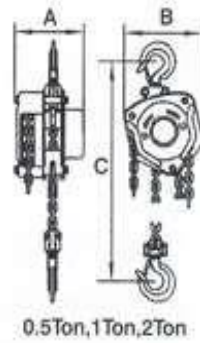


CRAB/HOIST





CHAIN HOIST- COLUMBUS MCKINNON





STATUTORY CERTIFICATION

SL No	Certification	No.
01	GST NO	08AAHCC4146R1Z3
02	PAN NO.	AAHCC4146R
03	TAN NO.	JPRC04651D
04	CST/VAT REGISTRATION NO	
05	INDUSTRIAL LICENCE NO.	RJ02A0016960 /UDYAM-RJ-02-0010081



COMPANY ADDRESS

~~CONFIDENTIAL~~

Plot No. F-224, Industrial Area Karoli, Tijara (Distt. Alwar)

- *WE ARE EAGER TO JOIN HANDS WITH ALL PRISTIGIOUS ASSOCIATES, WHO BELIVES IN MAKING INDIA- THE MOST POWERFUL COUNTRY IN THE WORLD.*

~~CONFIDENTIAL~~

OUR CLIENTS



eminence with excellence...





SHRIRAM
PISTONS & RINGS LTD.



J. Kumar

ISO 9001:2008
ISO 14001:2004
OHSAS 18001:2007

NTF



ESCORTS

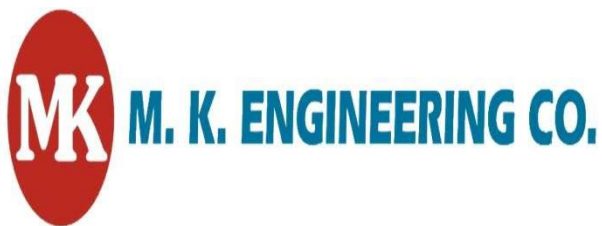
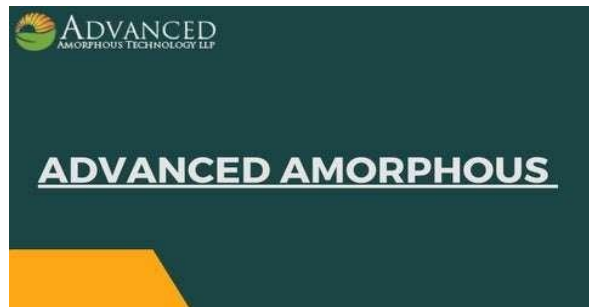
CAPARO

MISTCOLD
HEAT TRANSFER COILS

talbros

MAXX
WATER DISPLACEMENT TECHNOLOGY





Texmaco
Rail & Engineering Ltd.



SKH

LOROM

SBF
RAPiD >>>®
TMT
Strong. Build. Forever...

ROOP



THANK YOU
